

ELECTRICAL ENCLOSURES



INTRODUCTION

ARK Technologies, is a company design, manufacture and supply all types of Steel Enclosures needed for electrical & IT industry.

We manufacture enclosures in our production facility in Homagama. Our factory is equipped with all required steel fabrication machines to manufacture enclosures.

We buy steel & other raw materials from suppliers with lowest prices. We minimize our overheads and lower our production cost. Therefore we can pass the cost saving to our customers, which make our enclosures are the lowest prices in the market.

We have a skilled production team to manufacture products at faster speed and deliver customer orders fast as possible.

We take every step to maintain good quality. We always ready to cater customer needs and we can make enclosures to match customer needs

We are a well-managed company with strong business ethics. We always give best customer service to our customers.

ARK Technologies, is well reputed as a company supply products at the lowest prices in the market and our products are used by many electrical switchboard manufacturers and customers for many projects in Sri Lanka.

Vision

"Our vision is to deliver electrical enclosures at the lowest prices in Sri Lanka"

Mission

To provide products to best possible quality and earn good reputation among customers as supplier of best deal in the market

Our Values

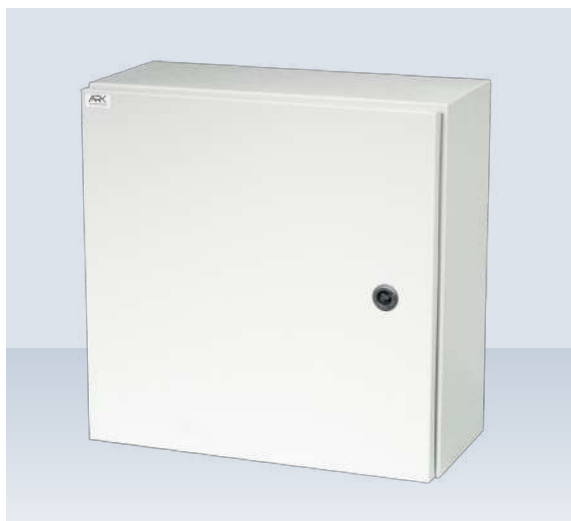
Responsible, ethical and reliable enclosure supplier



CONTENT

▪ Wall Mounting Enclosures	03 - 04
▪ Wall Mounting Enclosures - Front Plates	05
▪ Wall Mounting Enclosures - Front Rails	06
▪ Distribution Boards	06 - 07
▪ MCCB + Distribution Boards	08
▪ Free Standing Panels	08 - 09
▪ Free Standing Panels - Front Plates	10
▪ Free Standing Panels - Front Rails	11
▪ Stainless Steel - Wall Mounting Enclosures	12 - 13
▪ Terminal Box	14
▪ Stainless Steel - Terminal Box	14
▪ Meter Box - Electrical Meters	15
▪ MCCB Box / MCB Box / Isolator Box	15
▪ Change Over Box	16
▪ Bus Bar box	16
▪ Feeder Pillar - CEB Type	17
▪ CCTV Box	18
▪ Water Meter Frame	18
▪ Fire Cabinets	19
▪ 19" Rack - Wall Mounting	19 - 20
▪ 19" Rack - Free Standing	20 - 21
▪ Custom Enclosures	21
▪ Technical specifications	22
▪ IP Chart	22

WALL MOUNTING ENCLOSURES



Wall Mounting Enclosures consist of enclosure cabin, Door, Mounting Plate, Gland Plate, Gasket & Key Lock (Metal/Plastic).

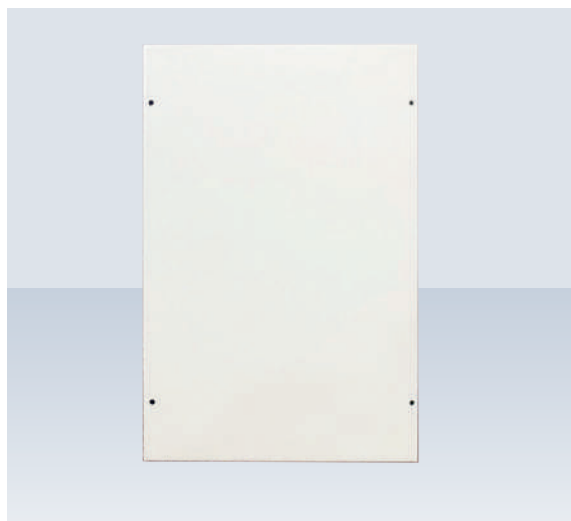
IP 54, Indoor type wall mounting enclosures are used Electro galvanized sheet with epoxy polyester powder coating. RAL 7032 & RAL 7035 are the regular colors used in Wall Mounting Enclosure.

Oder No.	Discription W x H x D	Thickness (mm)		
		Cabin	Door	Mounting plate
A20 100	200 X 200 X 150	0.8	1.0	1.2
A20 110	200 X 250 X 150	0.8	1.0	1.2
A20 150	200 X 300 X 150	0.8	1.0	1.2
A20 170	200 X 300 X 200	0.8	1.0	1.2
A20 200	250 X 300 X 150	0.8	1.0	1.2
A20 220	250 X 300 X 200	0.8	1.0	1.2
A20 250	300 X 300 X 150	0.8	1.0	1.2
A20 270	300 X 300 X 200	0.8	1.0	1.2
A20 300	300 X 400 X 150	0.8	1.0	1.2
A20 320	300 X 400 X 175	0.8	1.0	1.2
A20 335	300 X 400 X 200	0.8	1.0	1.2
A20 340	300 X 400 X 250	0.8	1.0	1.2
A20 350	300 X 500 X 200	0.8	1.0	1.2
A20 370	300 X 500 X 250	0.8	1.0	1.2
A20 400	400 X 250 X 150	1.0	1.0	1.2
A20 405	400 X 300 X 150	1.0	1.0	1.2
A20 410	400 X 300 X 175	1.0	1.0	1.2
A20 415	400 X 300 X 200	1.0	1.0	1.2
A20 420	400 X 400 X 150	1.0	1.0	1.2
A20 430	400 X 400 X 175	1.0	1.0	1.2
A20 435	400 X 400 X 200	1.0	1.0	1.2
A20 450	400 X 500 X 150	1.0	1.0	1.2
A20 460	400 X 500 X 200	1.0	1.0	1.2
A20 470	400 X 500 X 250	1.0	1.0	1.2
A20 480	400 X 600 X 150	1.0	1.0	1.2
A20 485	400 X 600 X 200	1.0	1.0	1.2
A20 510	400 X 600 X 150	1.0	1.0	1.2
A20 490	400 X 800 X 200	1.0	1.0	1.2

WALL MOUNTING ENCLOSURES

A20 500	400 X 1000 X 200	1.0	1.0	1.2
A20 520	500 X 400 X 200	1.0	1.0	1.2
A20 540	500 X 500 X 200	1.0	1.0	1.2
A20 560	500 X 600 X 200	1.0	1.0	1.2
A20 570	500 X 700 X 200	1.0	1.0	1.2
A20 580	500 X 700 X 250	1.0	1.0	1.2
A20 590	500 X 700 X 300	1.0	1.0	1.2
A20 600	600 X 400 X 200	1.0	1.2	1.5
A20 610	600 X 400 X 250	1.0	1.2	1.5
A20 620	600 X 400 X 300	1.0	1.2	1.5
A20 630	600 X 500 X 200	1.0	1.2	1.5
A20 640	600 X 500 X 250	1.0	1.2	1.5
A20 650	600 X 600 X 200	1.0	1.2	1.5
A20 660	600 X 600 X 250	1.0	1.2	1.5
A20 670	600 X 600 X 300	1.0	1.2	1.5
A20 685	600 X 800 X 200	1.0	1.2	1.5
A20 690	600 X 800 X 250	1.0	1.2	1.5
A20 695	600 X 800 X 300	1.0	1.2	1.5
A20 710	600 X 1000 X 200	1.0	1.2	1.5
A20 720	600 X 1000 X 250	1.0	1.2	1.5
A20 730	600 X 1000 X 300	1.0	1.2	1.5
A20 750	600 X 1200 X 200	1.2	1.2	1.5
A20 760	600 X 1200 X 250	1.2	1.2	1.5
A20 770	600 X 1200 X 300	1.2	1.2	1.5
A20 800	800 X 600 X 250	1.2	1.2	1.5
A20 810	800 X 600 X 300	1.2	1.2	1.5
A20 820	800 X 800 X 200	1.2	1.2	1.5
A20 830	800 X 800 X 250	1.2	1.2	1.5
A20 840	800 X 800 X 300	1.2	1.2	1.5
A20 850	800 X 1000 X 200	1.2	1.2	1.5
A20 860	800 X 1000 X 250	1.2	1.2	1.5
A20 870	800 X 1000 X 300	1.2	1.2	1.5
A20 880	800 X 1200 X 200	1.2	1.2	1.5
A20 890	800 X 1200 X 250	1.2	1.2	1.5
A20 895	800 X 1200 X 300	1.2	1.2	1.5



WALL MOUNTING ENCLOSURES - FRONT PLATES


Wall Mounting Enclosure's Front Plate (Cover Plate) are used to cover the enclosure on the front side and given a better barrier protection. Epoxy polyester powder coated Electro galvanized sheets are regularly used to manufacture the Front Plates

Oder No.	Discription W x H	Thickness (mm) Mounting plate
A21 100	200 X 200	0.8
A21 110	200 X 250	0.8
A21 120	200 X 300	0.8
A21 200	250 X 300	0.8
A21 250	300 X 300	0.8
A21 300	300 X 400	0.8
A21 350	300 X 500	0.8
A21 400	400 X 250	1.0
A21 410	400 X 300	1.0
A21 420	400 X 400	1.0
A21 450	400 X 500	1.0
A21 480	400 X 600	1.0
A21 485	400 X 1000	1.0
A21 540	500 X 400	1.0
A21 550	500 X 500	1.0
A21 560	500 X 600	1.0
A21 570	500 X 700	1.0
A21 640	600 X 400	1.0
A21 650	600 X 500	1.0
A21 660	600 X 600	1.0
A21 685	600 X 800	1.0
A21 710	600 X 1000	1.0
A21 695	600 X 1200	1.0
A21 700	700 X 800	1.0
A21 800	800 X 600	1.0
A21 820	800 X 800	1.0
A21 850	800 X 1000	1.0
A21 870	800 X 1200	1.0

WALL MOUNTING ENCLOSURES - FRONT RAILS



Wall Mounting Enclosure's Front Rails (Cover Plate Rail) are used to fix the front plate with the enclosure on the front side of the enclosure. Epoxy polyester powder coated Electro galvanized sheets are regularly used to manufacture the Front Rail

Oder No.	Discription (mm)	Width (mm)	Thickness (mm)	
A21 900	200	35	1.0	per set
A21 905	250	35	1.0	per set
A21 910	300	35	1.0	per set
A21 915	400	35	1.0	per set
A21 920	500	35	1.0	per set
A21 925	600	35	1.0	per set
A21 930	700	35	1.0	per set
A21 935	800	35	1.2	per set
A21 940	1000	35	1.2	per set
A21 945	1200	35	1.2	per set

DISTRIBUTION BOARDS



Distribution Board consists of cabin, gland plate/s & steel door, mounting rails, DIN rails, and front plates.

- Epoxy Polyester powder coated to textured RAL 7032 & RAL 9010.
- Electro Galvanized sheets are used to manufacture the distribution board.
- DIN rail can be removed from the cabin to facilitate faster wiring.
- Neutral & Earth links are supplied.
- Terminal section is covered by a separate front plate.
- Rubber gasket on door to prevent dust & water protection in some models.
- Earth Bolt on door & cabin for earthling.

DISTRIBUTION BOARDS

Oder No.	Discription	Size W x H x D	Cabin	Thickness (mm)	
				Door	Mounting plate
Surface Mounting					
A22 000	1 Row x 8 Ways	300 X 250 X 125	0.6	0.8	0.8
A22 300	1 Row x 12 Ways	350 X 300 X 125	0.6	0.8	0.8
A22 305	2 Row x 12 Ways	350 X 400 X 125	0.6	0.8	0.8
A22 310	3 Row x 12 Ways	350 X 600 X 125	0.6	0.8	0.8
A22 315	4 Row x 12 Ways	350 X 700 X 125	0.6	0.8	0.8
A22 100	1 Row x 15 Ways	380 X 250 X 120	0.6	0.8	0.8
A22 105	1 Row x 15 Ways	380 X 380 X 120	0.8	0.8	0.8
A22 110	1 Row x 15 Ways	400 X 600 X 125	0.6	0.8	0.8
A22 115	1 Row x 15 Ways	400 X 700 X 125	0.6	0.8	0.8
A22 150	1 Row x 18 Ways	450 X 250 X 125	0.6	0.8	0.8
A22 155	1 Row x 18 Ways	450 X 400 X 125	0.6	0.8	0.8
A22 160	1 Row x 18 Ways	450 X 600 X 125	0.6	0.8	0.8
A22 165	1 Row x 18 Ways	450 X 700 X 125	0.6	0.8	0.8
Flush Mounting					
A22 400	1 Row x 12 Ways	350 X 300 X 125	0.6	0.8	0.8
A22 405	1 Row x 12 Ways	350 X 400 X 125	0.6	0.8	0.8
A22 410	1 Row x 12 Ways	350 X 600 X 125	0.6	0.8	0.8
A22 415	1 Row x 12 Ways	350 X 700 X 125	0.6	0.8	0.8
A22 200	1 Row x 15 Ways	380 X 250 X 120	0.6	0.8	0.8
A22 205	1 Row x 15 Ways	380 X 380 X 120	0.8	0.8	0.8
A22 210	1 Row x 15 Ways	400 X 600 X 125	0.6	0.8	0.8
A22 215	1 Row x 15 Ways	400 X 700 X 125	0.6	0.8	0.8
A22 250	1 Row x 18 Ways	450 X 250 X 125	0.6	0.8	0.8
A22 255	1 Row x 18 Ways	450 X 400 X 125	0.6	0.8	0.8
A22 260	1 Row x 18 Ways	450 X 600 X 125	0.6	0.8	0.8
A22 265	1 Row x 18 Ways	450 X 700 X 125	0.6	0.8	0.8



MCCB + DISTRIBUTION BOARDS



MCCB + Distribution board also a part of Row Boards. Electro Galvanized sheet with Epoxy Polyester powder coated are mainly used to manufacturing enclosure. RAL 7032 is the regular colors used for this.

Mounting plate for MCCB can be adjustable in depth to accommodate different brands of MCCBs.

Cabin, door, front plate din rails, Neutral Link, Earth links and mounting plate for MCCB are the main structure of the MCCB + Distribution board.

Oder No.	Discription	Size W x H x D	Thickness (mm)			
			Cabin	Door	Cover plate	Mounting plate
Surface Mounting						
X22 115	3 X 14 +MCCB	400 X 850 X 150	1.0	1.2	1.0	1.5
X22 116	3 X 18 +MCCB	500 X 850 X 150	1.0	1.2	1.0	1.5
X22 117	4 X 14 +MCCB	400 X 1000 X 150	1.0	1.2	1.0	1.5
X22 118	4 X 18 +MCCB	500 X 1000 X 150	1.0	1.2	1.0	1.5

FREE STANDING PANELS



Free standing enclosures manufactured for both indoor and outdoor type. Electro Galvanized sheet with Epoxy Polyester powder coated are mainly used to manufacture the Free Standing enclosures. RAL 7032 & RAL 7035 are the regular colors used for electrical enclosures.

Front and Rear Frame, Side Cover, Rear Cover, Plinth, gland plate, front door & gasket are the standard construction of the free standing enclosures.

FREE STANDING PANELS

Oder No.	Discription	Size W x H x D	Material specifications
<u>ARK - Free Standing Panel - Assembled</u>			
A10 100	Free Standing Panel	600 X 1200 X 400	Plinth - 1.5mm, Vertical, Front & Back, Side Profiles - 1.5mm, Cable entry plate - 1.5mm, Top Plate - 1.0mm, Covers - 1.0mm, Doors - 1.2mm
A10 102	Free Standing Panel	600 X 1600 X 400	
A10 104	Free Standing Panel	600 X 1800 X 400	
A10 106	Free Standing Panel	600 X 2000 X 400	
A10 110	Free Standing Panel	800 X 2000 X 400	
A10 120	Free Standing Panel	600 X 1200 X 500	Plinth - 1.5mm, Vertical, Front & Back, Side Profiles - 1.5mm, Cable entry plate - 1.5mm, Top Plate - 1.0mm, Covers - 1.0mm, Doors - 1.2mm
A10 122	Free Standing Panel	600 X 1600 X 500	
A10 124	Free Standing Panel	600 X 1800 X 500	
A10 126	Free Standing Panel	600 X 2000 X 500	
A10 128	Free Standing Panel	600 X 2200 X 500	
A10 140	Free Standing Panel	800 X 2000 X 500	Plinth - 1.5mm, Vertical, Front & Back, Side Profiles - 1.5mm, Cable entry plate - 1.5mm, Top Plate - 1.0mm, Covers - 1.0mm, Doors - 1.2mm
A10 142	Free Standing Panel	800 X 2200 X 500	
A10 150	Free Standing Panel	600 X 2000 X 600	Plinth - 1.5mm, Vertical, Front & Back, Side Profiles - 1.5mm, Cable entry plate - 1.5mm, Top Plate - 1.0mm, Covers - 1.0mm, Doors - 1.2mm
A10 152	Free Standing Panel	800 X 2200 X 600	
A10 160	Free Standing Panel	600 X 2000 X 800	Plinth - 1.5mm, Vertical, Front & Back, Side Profiles - 1.5mm, Cable entry plate - 1.5mm, Top Plate - 1.0mm, Covers - 1.0mm, Doors - 1.2mm
A10 162	Free Standing Panel	800 X 2000 X 800	
A10 170	Free Standing Panel	600 X 2000 X 1000	Plinth - 1.5mm, Vertical, Front & Back, Side Profiles - 1.5mm, Cable entry plate - 1.5mm, Top Plate - 1.0mm, Covers - 1.0mm, Doors - 1.2mm
A10 172	Free Standing Panel	800 X 2000 X 1000	
<u>ARK - Free Standing Panel - Light Version - Assembled</u>			
A10 300	Free Standing Panel	600 X 1200 X 400	Plinth - 1.2mm, Vertical, Front & Back, Side Profiles - 1.2mm, Cable entry plate - 1.2mm, Top Plate - 1.0mm, Covers - 1.0mm, Doors - 1.2mm
A10 302	Free Standing Panel	600 X 1600 X 400	
A10 304	Free Standing Panel	600 X 1800 X 400	
A10 306	Free Standing Panel	600 X 2000 X 400	



FREE STANDING PANELS - FRONT PLATES


Free Standing Enclosure Front Plate (Cover Plate) are used to cover the s on the front side and given a better barrier protection to the enclosure. Epoxy polyester powder coated Electro galvanized sheets are regularly used to manufacture the Front Plates.

Oder No.	Discription (mm)	Size (mm)	Thickness (mm)
A21 100	Front Plate	200 x 200	0.8
A21 110	Front Plate	200 x 250	0.8
A21 120	Front Plate	200 x 300	0.8
A21 200	Front Plate	250 x300	0.8
A21 250	Front Plate	300 x 300	0.8
A21 300	Front Plate	300 x 400	0.8
A21 350	Front Plate	300 x 500	0.8
A21 400	Front Plate	400 x 250	1.0
A21 410	Front Plate	400 x 300	1.0
A21 420	Front Plate	400 x 400	1.0
A21 450	Front Plate	400 x 500	1.0
A21 480	Front Plate	400 x 600	1.0
A21 485	Front Plate	400 x 1000	1.0
A21 540	Front Plate	500 x 400	1.0
A21 550	Front Plate	500 x 500	1.0
A21 560	Front Plate	500 x 600	1.0
A21 570	Front Plate	500 x 700	1.0
A21 640	Front Plate	600 x 400	1.0
A21 650	Front Plate	600 x 500	1.0
A21 660	Front Plate	600 x 600	1.0
A21 685	Front Plate	600 x 800	1.0
A21 690	Front Plate	600 x 1000	1.0
A21 695	Front Plate	600 x 1200	1.0
A21 696	Front Plate	600 x 1600	1.0
A21 697	Front Plate	600 x 1800	1.0
A21 698	Front Plate	600 x 2000	1.0
A21 699	Front Plate	600 x 2200	1.0
A21 700	Front Plate	700 x 800	1.0
A21 800	Front Plate	800 x 600	1.0
A21 820	Front Plate	800 x 800	1.0
A21 850	Front Plate	800 x 1000	1.0
A21 870	Front Plate	800 x 1200	1.0
A21 875	Front Plate	800 x 2000	1.0
A21 880	Front Plate	800 x 2200	1.0

FREE STANDING PANELS - FRONT RAILS



Free Standing Enclosure Front Rails (Cover Plate Rail) are used to fix the front plate with the enclosure on the front side of the enclosure. Epoxy polyester powder coated Electro galvanized sheets are regularly used to manufacture the Front Rail.

Oder No.	Discription (mm)	Height (mm)	Width (mm)	Thickness (mm)	
A21 900	Front Rail	200	35	1.0	per set
A21 905	Front Rail	250	35	1.0	per set
A21 910	Front Rail	300	35	1.0	per set
A21 915	Front Rail	400	35	1.0	per set
A21 920	Front Rail	500	35	1.0	per set
A21 925	Front Rail	600	35	1.0	per set
A21 930	Front Rail	700	35	1.0	per set
A21 935	Front Rail	800	35	1.2	per set
A21 940	Front Rail	1000	35	1.2	per set
A21 945	Front Rail	1200	35	1.2	per set
A21 946	Front Rail	1600	35	1.2	per set
A21 947	Front Rail	1800	35	1.2	per set
A21 948	Front Rail	2000	35	1.2	per set
A21 949	Front Rail	2200	35	1.2	per set



STAINLESS STEEL - WALL MOUNTING ENCLOSURES



Stainless Steel Wall mounting enclosures specially design for fully outdoor purpose.

SS Grade 304 & 306 mainly used for manufacturing process.

Specially, accessories such as Hinges, Locks, nuts & bolts also used in stainless steel.

Oder No.	Discription W x H x D	Cabin	Thickness (mm)		
			Door	Mounting plate	
SS20 100	200 X 200 X 150	0.8	1.0	1.2	
SS20 110	200 X 250 X 150	0.8	1.0	1.2	
SS20 150	200 X 300 X 150	0.8	1.0	1.2	
SS20 170	200 X 300 X 200	0.8	1.0	1.2	
SS20 200	200 X 300 X 150	0.8	1.0	1.2	
SS20 220	200 X 300 X 200	0.8	1.0	1.2	
SS20 250	300 X 300 X 150	0.8	1.0	1.2	
SS20 270	300 X 300 X 200	0.8	1.0	1.2	
SS20 300	300 X 400 X 150	0.8	1.0	1.2	
SS20 320	300 X 400 X 175	0.8	1.0	1.2	
SS20 335	300 X 400 X 200	0.8	1.0	1.2	
SS20 340	300 X 400 X 250	0.8	1.0	1.2	
SS20 350	300 X 500 X 200	0.8	1.0	1.2	
SS20 370	300 X 500 X 250	0.8	1.0	1.2	
SS20 400	400 X 250 X 150	1.0	1.0	1.2	
SS20 405	400 X 300 X 150	1.0	1.0	1.2	
SS20 410	400 X 300 X 175	1.0	1.0	1.2	
SS20 415	400 X 300 X 200	1.0	1.0	1.2	
SS20 420	400 X 400 X 150	1.0	1.0	1.2	
SS20 430	400 X 400 X 175	1.0	1.0	1.2	
SS20 435	400 X 400 X 200	1.0	1.0	1.2	
SS20 450	400 X 500 X 150	1.0	1.0	1.2	
SS20 460	400 X 500 X 200	1.0	1.0	1.2	
SS20 470	400 X 500 X 250	1.0	1.0	1.2	
SS20 480	400 X 600 X 150	1.0	1.0	1.2	
SS20 485	400 X 600 X 200	1.0	1.0	1.2	
SS20 510	400 X 600 X 250	1.0	1.0	1.2	
SS20 490	400 X 800 X 200	1.0	1.0	1.2	

STAINLESS STEEL - WALL MOUNTING ENCLOSURES

SS20 500	400 X 1000 X 200	1.0	1.0	1.2
SS20 520	500 X 400 X 200	1.0	1.0	1.2
SS20 540	500 X 500 X 200	1.0	1.0	1.2
SS20 560	500 X 600 X 200	1.0	1.0	1.2
SS20 570	500 X 700 X 200	1.0	1.0	1.2
SS20 580	500 X 700 X 250	1.0	1.0	1.2
SS20 590	500 X 700 X 300	1.0	1.0	1.2
SS20 600	600 X 400 X 200	1.0	1.2	1.5
SS20 610	600 X 400 X 250	1.0	1.2	1.5
SS20 620	600 X 400 X 300	1.0	1.2	1.5
SS20 630	600 X 500 X 200	1.0	1.2	1.5
SS20 640	600 X 500 X 250	1.0	1.2	1.5
SS20 650	600 X 600 X 200	1.0	1.2	1.5
SS20 660	600 X 600 X 250	1.0	1.2	1.5
SS20 670	600 X 600 X 300	1.0	1.2	1.5
SS20 685	600 X 800 X 200	1.0	1.2	1.5
SS20 690	600 X 800 X 250	1.0	1.2	1.5
SS20 695	600 X 800 X 300	1.0	1.2	1.5
SS20 710	600 X 1000 X 200	1.0	1.2	1.5
SS20 720	600 X 1000 X 250	1.0	1.2	1.5
SS20 730	600 X 1000 X 300	1.0	1.2	1.5
SS20 750	600 X 1200 X 200	1.2	1.2	1.5
SS20 760	600 X 1200 X 250	1.2	1.2	1.5
SS20 770	600 X 1200 X 300	1.2	1.2	1.5
SS20 800	800 X 600 X 250	1.2	1.2	1.5
SS20 810	800 X 600 X 300	1.2	1.2	1.5
SS20 820	800 X 800 X 200	1.2	1.2	1.5
SS20 830	800 X 800 X 250	1.2	1.2	1.5
SS20 840	800 X 800 X 300	1.2	1.2	1.5
SS20 850	800 X 1000 X 200	1.2	1.2	1.5
SS20 860	800 X 1000 X 250	1.2	1.2	1.5
A20 870	800 X 1000 X 300	1.2	1.2	1.2
SS20 880	800 X 1200 X 200	1.2	1.2	1.5
SS20 890	800 X 1200 X 250	1.2	1.2	1.5
SS20 895	800 X 1200 X 300	1.2	1.2	1.5



TERMINAL BOX



Terminal Box consists of cabin, lid fix by screws and rails or mounting plate for equipment mounting.

Terminal Boxes are available in different sizes to select as per requirements.

Oder No.	Discription	Size W x H x D	Thickness (mm)	
			Cabin	Door
AT 100	Terminal Box	As per the customer request	As per the customer request	

STAINLESS STEEL - TERMINAL BOX



Stainless Steel Terminal Box consists of cabin, lid fix by screws and rails or mounting plate for equipment mounting.

Stainless Steel Terminal Boxes are available in stainless steel grades AISI 304 & AISI 316 and all fasteners are stainless steel.

Stainless Steel Terminal Boxes are available in different sizes to select as per requirements.

Oder No.	Discription	Size W x H x D	Thickness (mm)	
			Cabin	Door
ATSS 200	Terminal Box - SS	As per the customer request	As per the customer request	

METER BOX - ELECTRICAL METERS



The household meter box houses a number of electrical components including the meter, main switch / fuses / circuit breakers, which control the flow of electricity to home.

Epoxy Polyester Powder Coated Electro galvanized sheet used to design the Meter Box and it include, cabin, a door with a glass to get the meter reading and a wooden plate to fix the meter.

Oder No.	Discription	Size W x H x D
A26 100	Meter box - 1 phase	350 x 450 x 150
A26 150	Meter box - 3 phase	500 x 400 x 200

Cabin - 0.6 mm , Door - 0.6 mm with Wooden plate

MCCB BOX / MCB BOX / ISOLATOR BOX



Molded Case Circuit Breaker boxes (MCCB Box) and Isolator Box (Miniature circuit breaker boxes/MCB Box) design the Epoxy Polyester Powder Coated Electro galvanized sheets.

MCCB Box and Isolator box are include Cabin and Lid Type Cover.

MCCB Enclosures

Oder No.	Discription	Size W x H x D	Thickness (mm)	
			Cabin	Door
X90 139	MCCB Enclosure	250 x 300 x 125	0.8	1.0

MCB Box / Isolator Box

Oder No.	Discription	Size W x H x D	Thickness (mm)	
			Cabin	Door
X22 112	4P Isolator Box / MCB Box	130 x 200 x 60	0.8	1.0

CHANGE OVER BOX



Changeover boxes manufactured with Epoxy Polyester Powder Coated Electro galvanized sheets.
Mainly design as per the customer request.

Oder No.	Discription	Size W x H x D	Thickness (mm)	
			Cabin	Door
ACO 100	Changeover Enclosure- Rotary type handle	As per the customer request	As per the customer request	As per the customer request

BUS BAR BOX



Busbar boxes used Electro galvanized sheets, and the finished by using Epoxy Polyester Powder Coat.
Mainly busbar box include cabin and lid type door.
Single phase busbar box include two busbars (as per the customer requirement) for Phase -1 and Neutral
Three phase busbar box include four busbars (as per the customer requirement) for Phase -1, Phase -2, Phase -3 and Neutral

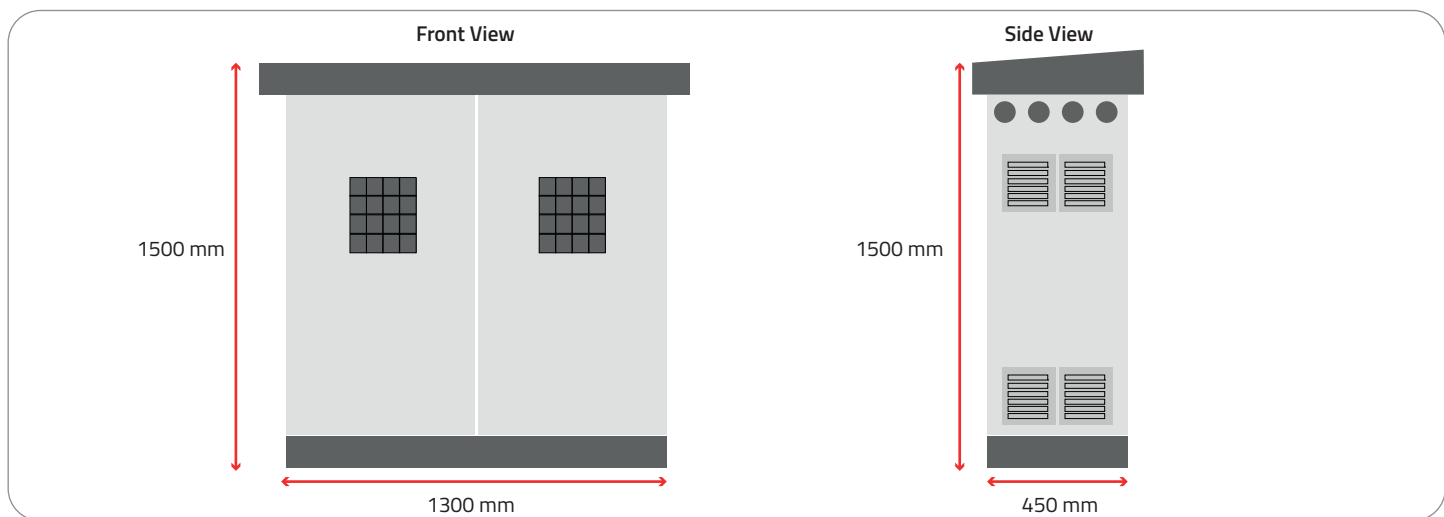
Oder No.	Discription	Size W x H x D	Thickness (mm)	
			Cabin	Door
ABB 100	Bus-Bar enclosure - Single Phase	As per the customer request	As per the customer request	As per the customer request
ABB 101	Bus-Bar enclosure - Three Phase	As per the customer request	As per the customer request	As per the customer request

FEEDER PILLAR CEB TYPE



Outdoor feeder pillar consist plinth, cabin, hinged door with 3 point Lock with rod, mounting plate, lifting eyes & canopy.
 Ventilation louvers and meter window can supply on customer request.
 Feeder pillars manufacture by using Electro Galvanized sheet with Primer Coat.

Discription	Size W x H x D	Thickness (mm)	
		Cabin	Door
Feeder Pillar - CEB Type	1300 x 1500 x 450	1.5	1.5



DVR BOX / CCTV BOX



DVR Boxes manufactured for indoor & wall mounted type only. Electro Galvanized sheet with Epoxy Polyester powder coated are mainly used to manufacture the DVR Boxes. RAL 7032 & RAL 7035 are the regular colors used for DVR Boxes.

Fully covered enclosure box with front steel door with a key lock (includes 2 keys). Rear end is open and have cutouts for anchor bolts. One set of louvers in each side surfaces & two set of louvers in the steel door is placed to increase air flow

Two cable entry points in each top and bottom surface.

Oder No.	Discription	Size W x H x D	Thickness (mm)	
			Cabin	Door
A40 030	DVR Enclosure	380 x 175 x 400	0.8	1.5

Material	Electro Galvanized Steel
Thickness	Enclosure – 0.8mm Railings – 1.5mm
Finish	Epoxy Polyester Powder Coated
Color	RAL 7035 (Standard)

WATER METER FRAME (WITH GLASS)



Water meter frame consist with outer frame and door with glass and key.

Oder No.	Discription	Size W x H x D	Thickness (mm)	
			Cabin	Door
X26 103	Water Meter Frame (with Glass)	410 x 230 x 30	0.6	0.6
		400 x 230 Outer		
		350 x 170 Inner		

FIRE CABINETS

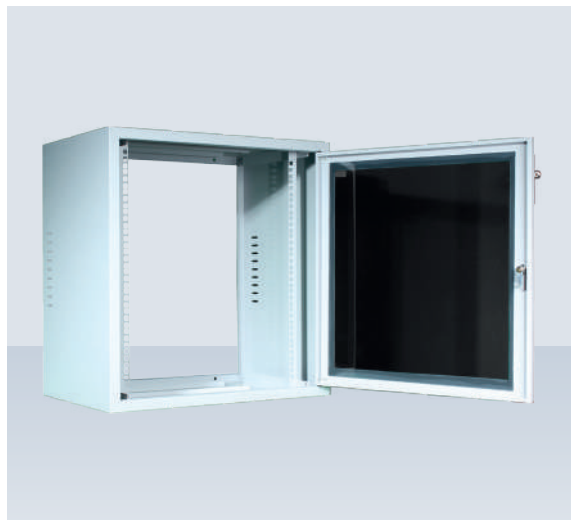


Fire cabinet consist with cabin and door with or without glass as per the customer request.

Color - Red

Oder No.	Discription	Size W x H x D	Thickness (mm)	
			Frame	Door
AF23 100	Fire Box	As per the customer request	As per the customer request	
AF23 200	Fire Box with Glass	As per the customer request	As per the customer request	

19" RACK - WM



Wall mounting racks are 19" industry standard and can be installed in equipment rooms or in office environments. Electro Galvanized sheet with Epoxy Polyester powder coated are mainly used to manufacture the wall mounting racks. RAL 7035 and 9005 are the regular colors used for racks and available in many sizes between 3U and 21U.

Free standing 19" racks consist with main Frame, Front Glass Door with Key Lock, 2 x Adjustable Railings, Top & Bottom semi-punched cable entry cuts and Top & Bottom semi-punched cuts for fan plate.

Oder No.	Model	Discription	Dimensions
A40 001	19" Rack	3U x 300	19" Wall Mounting Rack- 3UX300
A40 010	19" Rack	3U x 400	19" Wall Mounting Rack- 3UX400
A40 002	19" Rack	5U x 300	19" Wall Mounting Rack- 5UX300
A40 003	19" Rack	7U x 400	19" Wall Mounting Rack- 7UX400
A40 004	19" Rack	10U x 400	19" Wall Mounting Rack- 10UX400
A40 005	19" Rack	12U x 400	19" Wall Mounting Rack- 12UX400
A40 006	19" Rack	16U x 400	19" Wall Mounting Rack- 16UX400
A40 007	19" Rack	21U x 401	19" Wall Mounting Rack- 21UX401

19" RACK - WM

A40 011	19" Rack	3U x 600	19" Wall Mounting Rack- 3UX600	600x300x600
A40 012	19" Rack	5U x 600	19" Wall Mounting Rack- 5UX600	600x300x600
A40 013	19" Rack	7U x 600	19" Wall Mounting Rack- 7UX600	600x400x600
A40 014	19" Rack	10U x 600	19" Wall Mounting Rack- 10UX600	600x525x600
A40 015	19" Rack	12U x 600	19" Wall Mounting Rack- 12UX600	600x625x600
A40 016	19" Rack	16U x 600	19" Wall Mounting Rack- 16UX600	600x800x600
A40 017	19" Rack	21U x 600	19" Wall Mounting Rack- 21UX600	600x1025x600

19" RACK - FS



Free standing racks are 19" industry standard and can be installed in equipment rooms or in office environments. Electro Galvanized sheet with Epoxy Polyester powder coated are mainly used to manufacture the Free Standing racks. RAL 9005 (standard black cooler) is the regular color used for racks and available in many sizes between 16U and 48U.

Free standing 19" racks available with top & bottom frame, front & back frame, front and rear glass/mesh or steel doors, removable side panels, 4 Nos. rails set and a set of adjustable legs.

Oder No.	Model	Discription
A40 040	FS 16U	19" Floor Standing 600x16Ux600 - (W600mm x H800mm x D600mm)
A40 041	FS 16U	19" Floor Standing 600x16Ux800 - (W600mm x H800mm x D800mm)
A40 042	FS 16U	19" Floor Standing 600x16Ux1000 - (W600mm x H800mm x D1000mm)
A40 043	FS 22U	19" Floor Standing 600x22Ux600 - (W600mm x H1150mm x D600mm)
A40 044	FS 22U	19" Floor Standing 600x22Ux800 - (W600mm x H1150mm x D800mm)
A40 045	FS 22U	19" Floor Standing 600x22Ux1000 - (W600mm x H1150mm x D1000mm)
A40 046	FS 27U	19" Floor Standing 600x27Ux600 - (W600mm x H1450mm x D600mm)
A40 047	FS 27U	19" Floor Standing 600x27Ux800 - (W600mm x H1450mm x D800mm)
A40 048	FS 27U	19" Floor Standing 600x27Ux1000 - (W600mm x H1450mm x D1000mm)
A40 049	FS 31U	19" Floor Standing 600x31Ux600 - (W600mm x H1600mm x D600mm)
A40 050	FS 31U	19" Floor Standing 600x31Ux800 - (W600mm x H1600mm x D800mm)
A40 051	FS 31U	19" Floor Standing 600x31Ux1000 - (W600mm x H1600mm x D1000mm)
A40 052	FS 36U	19" Floor Standing 600x36Ux600 - (W600mm x H1800mm x D600mm)
A40 053	FS 36U	19" Floor Standing 600x36Ux800 - (W600mm x H1800mm x D800mm)
A40 054	FS 36U	19" Floor Standing 600x36Ux1000 - (W600mm x H1800mm x D1000mm)

19" RACK - FS

A40 055	FS 40U	19" Floor Standing 600x40Ux600 - (W600mm x H2000mm x D600mm)
A40 056	FS 40U	19" Floor Standing 600x40Ux800 - (W600mm x H2000mm x D800mm)
A40 057	FS 40U	19" Floor Standing 600x40Ux1000 - (W600mm x H2000mm x D1000mm)
A40 058	FS 42U	19" Floor Standing 600x42Ux600 - (W600mm x H2100mm x D600mm)
A40 059	FS 42U	19" Floor Standing 600x42Ux800 - (W600mm x H2100mm x D800mm)
A40 060	FS 42U	19" Floor Standing 600x42Ux1000 - (W600mm x H2100mm x D1000mm)
A40 061	FS 45U	19" Floor Standing 600x45Ux600 - (W600mm x H2200mm x D600mm)
A40 062	FS 45U	19" Floor Standing 600x45Ux800 - (W600mm x H2200mm x D800mm)
A40 063	FS 45U	19" Floor Standing 600x45Ux1000 - (W600mm x H2200mm x D1000mm)
A40 063	FS 48U	19" Floor Standing 600x48Ux600 - (W600mm x H2300mm x D600mm)
A40 065	FS 48U	19" Floor Standing 600x48Ux800 - (W600mm x H2300mm x D800mm)
A40 066	FS 48U	19" Floor Standing 600x48Ux1000 - (W600mm x H2300mm x D1000mm)

CUSTOM ENCLOSURES

Wall mounting, free standing, or any other electrical enclosure product can be customized as per the customer requirement.

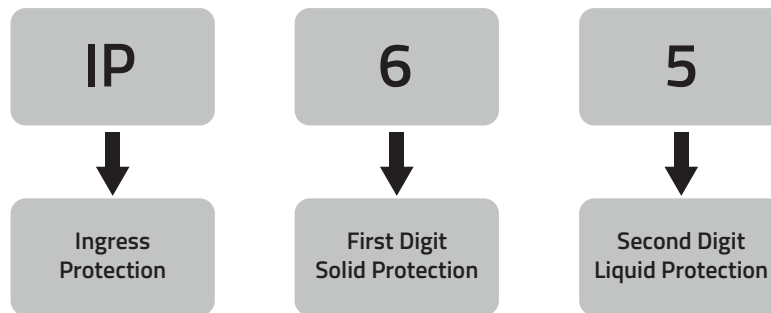


TECHNICAL SPECIFICATIONS

- **Material** – Electro galvanized sheet
- **Finishing**
 - Indoor - epoxy polyester powder coat
 - Outdoor – Primer coat
- **Color**
 - RAL 7032
 - RAL 7035
 - RAL 9010
 - Other on customer request
- **Thickness** – 0.8 mm to 2.0 mm

IP CHART

Ingress Protection (IP) rating



IP Rating Chart

IP ratings are represented by combining the first and second digits of the following columns. See example below.

1st Digit - SOLID Degree of protection against solid objects		2nd Digit - LIQUID Degree of protection against water	
	0 No Protection		0 No Protection
	1 Protected against a solid object greater than 50mm, such as a hand.		1 Protected against water drops.
	2 Protected against a solid object greater than 12.5mm, such as a finger.		2 Protected against water sprays at a 15 degree angle.
	3 Protected against a solid object greater than 2.5mm, such as a wire.		3 Protected against water spray at 60 degree angle.
	4 Protected against a solid object greater than 1.0mm, such as a thin strip.		4 Protected against water splashing from any angle.
	5 Dust Protected. Prevents ingress of dust sufficient to cause harm.		5 Protected against water jets from any angle.
	6 Dust tight. No ingress of dust.		6 Protected against powerful water jets and heavy seas.
Example:			7 Protected against the effects of temporary submersion in water (30 minutes at 1 foot).
			8 Protected against the effects of permanent submersion in water (up to 10 feet).

Our Product Range

- Wall Mounting Enclosures
- Distribution Board
- Free Standing Panels
- Stainless Steel Wall Mounting Enclosures
- Stainless Steel Free Standing Enclosures
- Stainless Steel Terminal Boxes
- Terminal Box
- Feeder Pillars - CEB Type
- MCB Boxes & Isolator Boxes
- Meter Boxes
- MCCB Boxes
- Bus Bar Boxes
- Change Over Boxes
- Fire Cabinets
- DVR Boxes
- 19" Racks - Wall Mounting
- 19" Racks - Free Standing
- Special Enclosures



ARK TECHNOLOGIES

📍 No. 08, De Vos Avenue, Colombo 04, Sri Lanka.

☎ Tel : +94 11 2 553 559

☎ Fax : +94 11 2 508 540

✉ Email : sales@ark-techgroup.com

🌐 Website : www.ark-techgroup.com